



Back to My Mac User's Guide

This guide will show you how to access a remote Leopard-based Mac, Time Capsule, or external hard disk connected to an AirPort Extreme Base Station over the Internet using MobileMe.

Overview

Retrieving a file from your Mac when you're away from home may seem like a daunting task. In fact, it may seem nearly impossible considering that your home Internet provider frequently changes your computer's Internet address—and your router or wireless base station disguises things further. But with Mac OS X Leopard and a MobileMe subscription, it's not only possible, it's simple.

Back to My Mac uses Bonjour networking technology to keep an updated record of your computer's addresses on a MobileMe server. So when you're on the road, you'll see your other computers in the Shared section of the Finder sidebar, just as if you were at home. You can even access the files stored on your Time Capsule or a hard disk connected to an AirPort Extreme with 802.11n.

Safe and secure

To make connecting to your Mac over the Internet secure, Back to My Mac uses advanced authentication and data encryption technologies to help prevent unauthorized access to your data and protect it during transit. For more information, see the Security section at the end of this guide.

How it Works



There are two main ways to connect to your remote computers with Back to My Mac:

- **File Sharing.** Browse the entire hard drive of your remote Mac, Time Capsule, or external hard disk connected to an AirPort Extreme Base Station, and drag files and folders to your local Mac. For example, you're on the road but you need a Keynote presentation that's on your Mac at home. Simply connect to your remote Mac, find the file you need, and drag it to the Mac that you're using.
- **Screen Sharing.** Control your remote Mac just as if you were sitting in front of it. Launch applications, edit documents, and more. For example, you want to add photos to your MobileMe Gallery while you're at work, but your iPhoto library is on your Mac at home. Screen Sharing opens a window displaying the desktop of your remote Mac. In the Screen Sharing window, just launch iPhoto on your home Mac, select the event, and publish to your MobileMe Gallery.

What You Need for Back to My Mac

Basic requirements:

- A MobileMe subscription
- For computer to computer file sharing or screen sharing: Two or more Mac computers running Mac OS X v10.5.6 (or later), each configured for use with the same MobileMe account.
- To access a Time Capsule or AirPort Extreme hard disk: One or more Mac computers running Mac OS X v10.5.6 (or later) and a Time Capsule or AirPort Extreme with 802.11n and an external hard disk attached. Each computer and device must be configured for use with the same MobileMe account. Your Time Capsule and AirPort Extreme need to have firmware version 7.4.1 (or later), and your Mac needs to have AirPort Utility 5.4.1 (or later) installed.
- A broadband Internet connection (Screen Sharing requires a 300Kbps or faster bidirectional network connection between computers)

Home network requirements:

- If you have a home network with one or more Mac computers, a Time Capsule, AirPort Extreme Base Station, or AirPort Express is recommended.



Time
Capsule

AirPort Extreme
Base Station

AirPort Express
Base Station

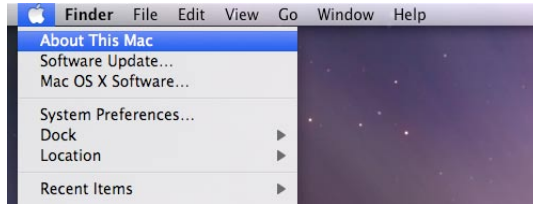
- Back to My Mac is also compatible with many modern home routers that fully support either NAT Port Mapping Protocol (NAT-PMP) or Universal Plug and Play (UPnP).

Setting Up Back To My Mac

Follow the instructions below to set up each of your Mac computers and home network devices to work with Back to My Mac.

Enable Back to My Mac on each Mac:

1. Make sure you have the latest Mac OS X software by choosing Apple Menu > About This Mac. If you're not running version 10.5.6 (or later), click Software Update, and install the necessary updates.



2. Choose Apple menu > System Preferences.
3. Click Internet & Sharing, and then click MobileMe.
4. If you're not already signed in, sign in using your MobileMe name and password. Remember to use the same MobileMe account information on each Mac.



5. Click the Back to My Mac tab.



6. If Back to My Mac is not already on, click Start.

Enable Sharing on each Mac you want to access remotely:

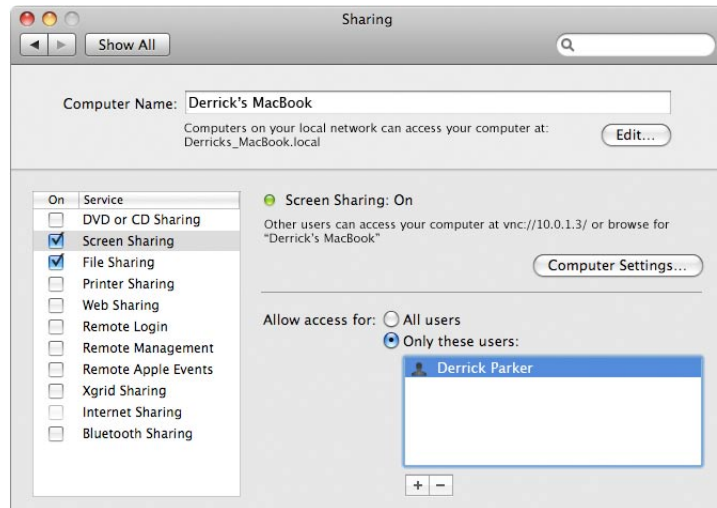
1. While still in the Back to My Mac pane, click Open Sharing Preferences.
2. If Screen Sharing and File Sharing are not already enabled, click the checkbox for each one.

If you have a third-party router:

Some routers (including integrated—or “all-in-one”—models, which also include a DSL or cable modem) may support NAT-PMP or UPnP technology, but it might not be enabled by default. If you are not sure whether your third-party router device supports NAT-PMP or UPnP, review the user documentation that came with it or contact the manufacturer.

If NAT-PMP or UPnP technology has been enabled on your router device and you can reach MobileMe services, but are unable to use Back to My Mac, check if a firmware update is available for your router.

If Back to My Mac is not working and you use a third-party router, make sure UPnP is enabled. Consult the documentation for your router or contact your ISP (if your ISP provided the device) or the manufacturer for information about enabling UPnP.

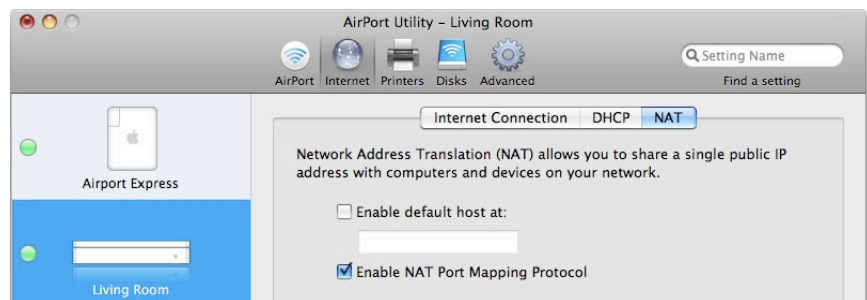


Important: For added security, you should select the “Only these users” button below “Allow access for,” and add your user name to the list. To do so, click the Add (+) button, select “Users and Groups” from the left column, and choose your user name from the column on the right.

Set up your home network

To use Back to My Mac on a home network, Apple recommends a Time Capsule or an AirPort Extreme Base Station or AirPort Express with NAT Port Mapping Protocol (NAT-PMP) enabled. Alternatively, you can use a third-party Internet router with Universal Plug and Play (UPnP) technology enabled (check the documentation that came with your router), and skip the instructions in this section.

1. Open AirPort Utility in the Utilities folder in the Applications folder.
2. Click the Internet button.
3. In the NAT section, verify that Enable NAT Port Mapping Protocol is selected.



4. Click Update, if needed.
5. Quit AirPort Utility.

Set up Back to My Mac on your Time Capsule or AirPort Extreme Base Station

If you plan to connect to a remote Time Capsule or external hard disk connected to an AirPort Extreme Base Station, you need to set up Back to My Mac on your device:

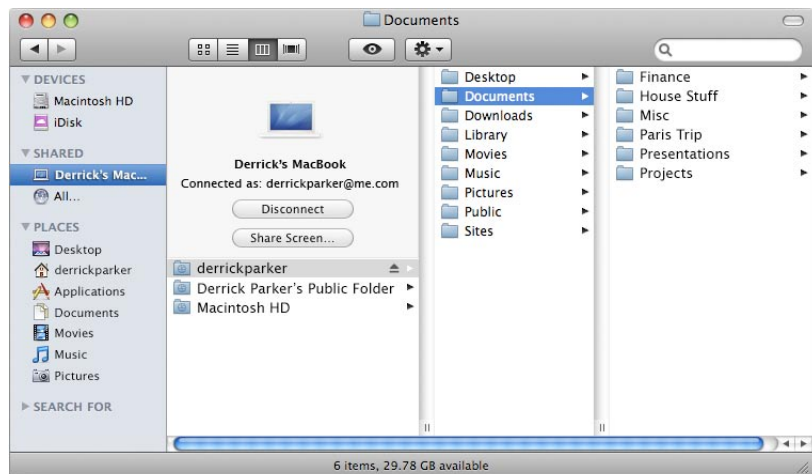
1. Open AirPort Utility (in the Utilities folder in your Applications folder).
2. Select the Time Capsule or AirPort Extreme Base Station from the list on the left.
3. If the version is not 7.4.1 or later, click Update Firmware.
4. If necessary, enter your password for the device, and then install the updates.
5. Click Advanced in the toolbar, and then click MobileMe.
6. Enter your MobileMe account and password.
7. Click Update to apply the changes.

Using Back to My Mac

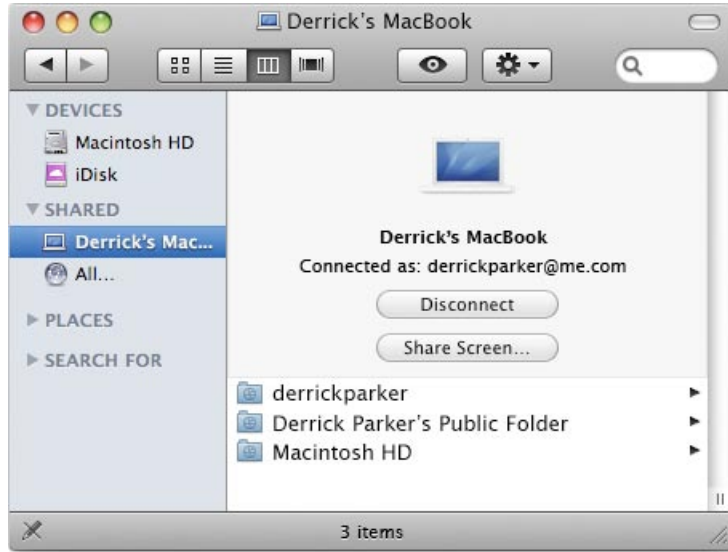
Once your Mac and home network are set up, using Back to My Mac is simple. The Finder displays your remote Mac computer(s), Time Capsule, or external hard disks connected to an AirPort Extreme Base Station in the sidebar where you can connect with a click.

File sharing

Using the File Sharing feature, you can drag files from your remote Mac, Time Capsule, or hard disk to your local Mac. You can also drag new files to your remote Mac, Time Capsule, or hard disk; create and delete folders; and arrange files however you like. Here's how:



1. Open a Finder window.
2. Below Shared in the sidebar, click the Mac, Time Capsule, or AirPort Extreme to which you want to connect.



3. If necessary, enter the password for the device, and then click Connect As.

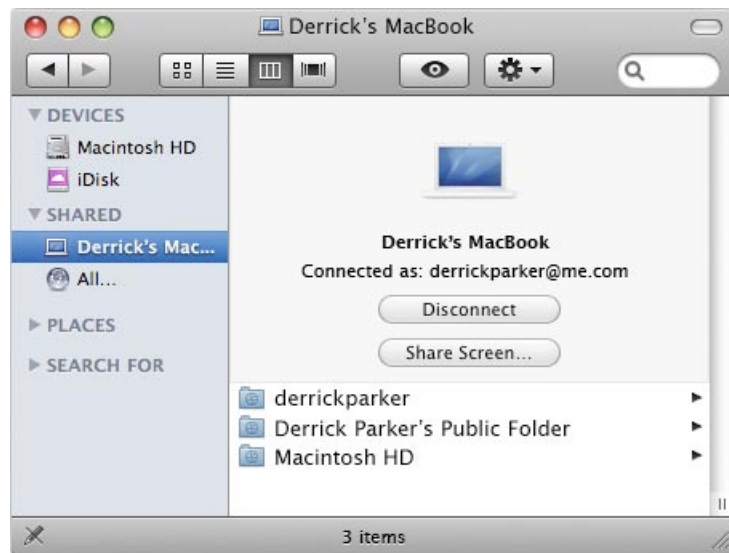
After you're connected, you can browse the hard drive of the remote device, and then drag any files you need to your local Mac.

Screen sharing

With the Screen Sharing feature, you control your remote Mac through a special window on your local Mac. You can launch applications, edit and save files, and even use many keyboard shortcuts. Here's how:



1. Open a Finder window.
2. Below Shared in the sidebar, click the Mac you want to control.



3. Click Share Screen and a new window opens, displaying the desktop for that Mac.

Important Tips

Creating a good password

Back to My Mac uses advanced authentication and data encryption technologies to protect your data. However, creating a good password is essential to keeping your data safe.

For more information on passwords, refer to "Choosing good passwords in Mac OS X" at <http://support.apple.com/kb/HT1506>.

To change your password, follow these steps:

1. Log in to MobileMe at www.me.com/account.
2. Click Password Settings and enter your new password twice.
3. Update your MobileMe password in System Preferences on all of your Mac computers.

If your Mac is lost or stolen, you should immediately change your password to prevent unauthorized access to your other computers.

Adjust sleep settings

Back to My Mac can connect to your remote computer only if it is not in sleep mode. If your computer is in sleep mode, it does not automatically wake up when you try to connect using Back to My Mac. To adjust your sleep settings, go to the Energy Saver pane of System Preferences on the computers you wish to access remotely.

Set screen saver locking

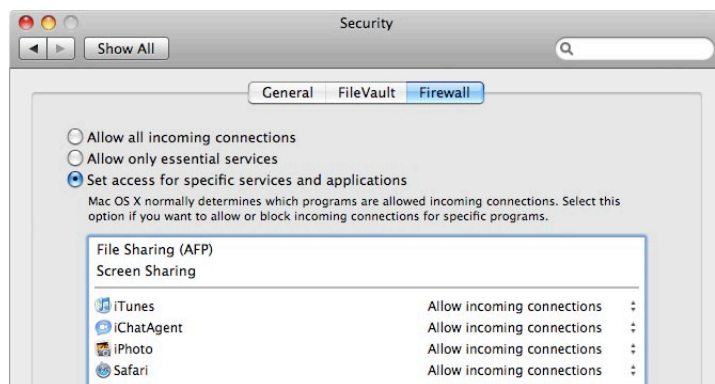
For added security, it's a good idea to turn on "Require password to wake this computer from sleep or screen saver" in your Security preferences.



In System Preferences, you can set the screen saver to come on after a short period of inactivity, or use hot corners to turn it on instantly if you're stepping away.

Check firewall settings if you cannot connect

Mac OS X Leopard has a built-in firewall, which is accessible from the Firewall tab of your Security preferences. You should verify that the firewall is set to either "Allow all incoming connections" or "Set access for specific services and applications."



If you use a third-party firewall, you may need to modify the configuration to permit Back to My Mac to function correctly. In some corporate (or managed) network environments, you may need to consult your system administrator. When signing in to MobileMe and enabling Back to My Mac, TCP ports 443 and 5354 are used. For connections between machines, Back to My Mac typically uses UDP port 4500.

Security

Back to My Mac uses advanced authentication and security technologies to help prevent unauthorized access to your data and protect it while it is in transit over the Internet. When you first sign in to MobileMe on a system running Leopard, you automatically receive a digital certificate and private key for your "Back to My Mac Encryption Certificate". When you connect to another system using Back to My Mac, authentication is performed using the standard Public Key Cryptography for Initial Authentication in Kerberos (PKINIT) protocol with the Back to My Mac Encryption Certificate. Communication between Back to My Mac computers over the public Internet is encrypted using IPSec.

For More Information

For Back to My Mac tips and troubleshooting, visit <http://support.apple.com/kb/HT1109>.

For more information about Back to My Mac and other MobileMe services, visit www.apple.com/mobileme.