




**Xserve**  
Apple Xserve  
Diagnostics  
User's Guide

For Version 3X103

 Apple, Inc.  
© 2008 Apple Inc. All rights reserved.

Under the copyright laws, this manual may not be copied, in whole or in part, without the written consent of Apple.

The Apple logo is a trademark of Apple, Inc., registered in the U.S. and other countries. Use of the "keyboard" Apple logo (Option-Shift-K) for commercial purposes without the prior written consent of Apple may constitute trademark infringement and unfair competition in violation of federal and state laws.

Every effort has been made to ensure that the information in this manual is accurate. Apple is not responsible for printing or clerical errors.

Apple  
1 Infinite Loop  
Cupertino, CA 95014-2084  
408-996-1010  
[www.apple.com](http://www.apple.com)

Apple, the Apple logo, Exposé, FireWire, Mac, Macintosh, the Mac logo, Mac OS, and Xserve are trademarks of Apple Inc., registered in the U.S. and other countries.

Finder and the FireWire logo are trademarks of Apple Inc.

AppleCare, Apple Store, and .Mac are service marks of Apple Inc., registered in the U.S. and other countries.

Intel, Intel Core, and Xeon are trademarks of Intel Corp. in the U.S. and other countries.

Other company and product names mentioned herein are trademarks of their respective companies. Mention of third-party products is for informational purposes only and constitutes neither an endorsement nor a recommendation. Apple assumes no responsibility with regard to the performance or use of these products.

Apparatus Claims of U.S. Patent Nos. 4,631,603, 4,577,216, 4,819,098 and 4,907,093 licensed for limited viewing uses only.

Simultaneously published in the United States and Canada.

019-1117/2008-01-01

# Contents

<b>Chapter 1</b>	<b>4 Overview and Requirements</b>
	5 Overview of AXD Configurations
	6 Requirements
<b>Chapter 2</b>	<b>8 Setup and Installation</b>
	8 Setting Up a NetBoot Server
	9 Setting Up a Storage Device for AXD Tool Installation
	11 Installing AXD EFI Tools
	12 Installing AXD Mac OS X Tools
<b>Chapter 3</b>	<b>14 Starting Up AXD Tools</b>
	14 Changing the Startup Disk
<b>Chapter 4</b>	<b>20 Using AXD Tools</b>
	20 Setting AXD to Host, Client, or Local Mode
	22 Using AXD EFI Tools
	25 Using AXD Mac OS X Tools
<b>Appendix</b>	<b>31 AXD Tools Test Reference</b>
	31 Comparison of Available Tests
	32 AXD EFI Tools Tests
	36 AXD Mac OS X Tests

## Apple Xserve Diagnostics tests your Intel-based Xserve for hardware issues.

Apple Xserve Diagnostics (AXD) runs a customizable set of tests to help you diagnose issues with the following:

- Boot ROM
- Ethernet controller
- Fan
- Hard drive
- Memory
- Power supply
- Processor
- Sensor
- USB ports
- Video controller

You can run AXD in Extensible Firmware Interface (EFI), which is referred to as *AXD EFI tools*, or in Mac OS X or Mac OS X Server, which is referred to as *AXD Mac OS X tools*.

By running AXD EFI tools, you can diagnose hardware issues that prevent Mac OS X Server from successfully starting up. You can also run tests without interference from Mac OS X Server and test more than 2.5 gigabytes (GB) of memory. However, AXD Mac OS X tools provides an enhanced interface and has more extensive sensor, hard drive, and video controller tests. For a detailed comparison and description of all available tests, see the appendix, “AXD Tools Test Reference” on page 31.

You can test the Xserve by running AXD tools directly on the Xserve. You can also run AXD tools on a computer that has a network connection to the Xserve and test the Xserve remotely.

**Note:** This guide describes how to use AXD version 3X103. If you're using a different version of AXD, the instructions in this guide might not work. AXD version 3X103 is included on the *Admin Tools and Xserve Diagnostics* CD version 10.5. You can find out which version of AXD tools you're running by opening AXD Mac OS X tools and choosing AXD > About Apple Xserve Diagnostics.

## Overview of AXD Configurations

You can install and run AXD in a variety of ways, so it's important that you choose the method that best suits your needs.

There are several AXD configuration options, each with advantages and disadvantages:

Option	Considerations
Host a NetBoot server	<p>Advantages:</p> <ul style="list-style-type: none"> <li>• Don't need to install AXD on an internal volume on the Xserve or on a portable storage device</li> <li>• Can test multiple Xserves using the same AXD install image</li> <li>• Allows you to use AXD EFI tools</li> <li>• You can start up AXD tools without an input device connected to the Xserve (if you have access to the Xserve's front panel)</li> </ul> <p>Disadvantages:</p> <ul style="list-style-type: none"> <li>• Requires a server to host NetBoot service and the AXD install image</li> <li>• Xserve must be on the same subnet as the NetBoot server</li> </ul>
Install AXD EFI tools on an internal volume	<p>Advantages:</p> <ul style="list-style-type: none"> <li>• Allows you to use AXD EFI tools</li> </ul> <p>Disadvantages:</p> <ul style="list-style-type: none"> <li>• Requires physical access to the Xserve</li> <li>• Requires a volume on the Xserve that has 15 megabytes (MB) free and that doesn't have Mac OS X or Mac OS X Server installed</li> </ul>
Install AXD EFI tools on a portable storage device	<p>Advantages:</p> <ul style="list-style-type: none"> <li>• Allows you to use AXD EFI tools</li> <li>• You can use the same portable storage device to test multiple Xserves</li> </ul> <p>Disadvantages:</p> <ul style="list-style-type: none"> <li>• Requires physical access to the Xserve</li> <li>• Requires a volume on the portable storage device that has 15 MB free and that doesn't have Mac OS X or Mac OS X Server installed</li> <li>• Portable storage device must be physically connected to the Xserve</li> </ul>
Start up the AXD EFI tools located on the <i>Admin Tools and Xserve Diagnostics</i> CD	<p>Advantages:</p> <ul style="list-style-type: none"> <li>• Allows you to use AXD EFI tools</li> <li>• You can use the same CD to test multiple Xserves</li> </ul> <p>Disadvantages:</p> <ul style="list-style-type: none"> <li>• Requires physical access to the Xserve</li> <li>• CD must be inserted in the Xserve</li> </ul>

Option	Considerations
Install AXD Mac OS X tools on an internal volume	<p>Advantages:</p> <ul style="list-style-type: none"> <li>• Allows you to use AXD Mac OS X tools</li> <li>• Don't need physical access to Xserve to run AXD remotely (if you have Apple Remote Desktop)</li> </ul> <p>Disadvantages:</p> <ul style="list-style-type: none"> <li>• Requires an empty volume on the Xserve with 7 GB free</li> <li>• Must install Mac OS X Server on the empty volume</li> </ul>
Install AXD Mac OS X tools on a portable storage device	<p>Advantages:</p> <ul style="list-style-type: none"> <li>• Allows you to use AXD Mac OS X tools</li> <li>• You can use the same portable storage device to test multiple Xserves</li> </ul> <p>Disadvantages:</p> <ul style="list-style-type: none"> <li>• Requires an empty volume on the portable storage device with 7 GB free</li> <li>• Must install Mac OS X Server on the empty volume</li> <li>• Portable storage device must be physically connected to the Xserve</li> </ul>

## Requirements

Before you can run AXD, you must meet general, storage device, and local and remote requirements.

If you want to host AXD on a NetBoot server, additional requirements must be met by the NetBoot server.

### General Requirements

To run AXD, you must have the following:

- An Intel-based Xserve with Mac OS X Server version 10.5 or later installed
- The *Mac OS X Server Install DVD* and *Admin Tools and Xserve Diagnostics* CD included with the Xserve (both should be version 10.5 or later)

### Storage Device Requirements

Depending on whether you want to run AXD EFI tools, AXD Mac OS X tools, or both, you need empty volumes either on the Xserve or on a portable storage device.

If you want to run AXD Mac OS X tools, the storage device must use the GUID Partition Table partition scheme. If you're running only AXD EFI tools on the storage device, you don't need to use the GUID Partition Table partition scheme.

You can run both AXD tools by having two empty volumes on the same Xserve or portable storage device. You need at least one of the following:

Goal	Requirement
Run AXD EFI tools	A volume on the Xserve that has at least 15 MB free, but doesn't have Mac OS X or Mac OS X Server installed
Run AXD Mac OS X tools	An empty volume on the Xserve with at least 7 GB free
Test multiple Xserves and run AXD EFI tools	A USB 2.0 flash drive, or USB 2.0 or FireWire hard drive with a volume that has at least 15 MB free, but doesn't have Mac OS X or Mac OS X Server installed
Test multiple Xserves and run AXD Mac OS X tools	A USB 2.0 or FireWire hard drive that has an empty volume with at least 7 GB free

## Local and Remote Requirements

To run AXD on your local Xserve, you'll need to attach a keyboard, mouse, and display.

To run AXD remotely, you must have the following:

- A Macintosh computer with Mac OS X version 10.4.4 or later installed. Mac OS X version 10.4.10 or later is recommended. This computer is referred to as the *host computer*.
- A network connection or a direct Ethernet connection from the host computer to the Xserve. The Xserve is referred to as the *client Xserve*.
- If the client Xserve is going to run AXD EFI tools and use a network connection, the network connection must use a built-in Ethernet port, and not an Ethernet adapter card.
- The Xserve must have AXD installed either on an internal volume or on a connected portable storage device; or it must be able to run AXD from a NetBoot server.
- The host computer must run AXD Mac OS X tools. The client Xserve can run AXD EFI tools or AXD Mac OS X tools.
- If the client Xserve is running AXD Mac OS X tools, you must be able to log in as the *root* account. The root account is a system administrator who has complete access to the Xserve.

If you want to run AXD entirely remotely (for situations where the Xserve is physically inaccessible or if you want to save AXD EFI tools test results), in addition to meeting the network requirements, the Xserve must be able to start up Mac OS X Server.

## NetBoot Server Requirements

To host a NetBoot server, your NetBoot server must:

- Have Mac OS X Server version 10.4.4 or later installed. Mac OS X version 10.4.10 or later is recommended.
- Be on the same subnet as the Xserve being tested.
- Have 15 MB of hard drive space available for an AXD NetBoot image.

## Before you can run AXD, you must set up your testing environment and install AXD.

Make sure you meet AXD requirements before attempting setup and installation. For more information, see “Requirements” on page 6.

### Setting Up a NetBoot Server

Before you set up a NetBoot server, make sure you have an available server that meets the requirements described in “NetBoot Server Requirements” on page 7.

After you set up a NetBoot server, you install the AXD NetBoot image. Because the AXD NetBoot image is a special image, you can’t use System Image Utility to delete the image.

For information about deleting the AXD NetBoot image, see the next section, “Deleting the AXD NetBoot Image.”

#### To set up a NetBoot server:

- 1 Open Server Admin (located in /Applications/Server/).
- 2 If the server that will host NetBoot isn’t listed, click the Add (+) button and choose Add Server. Enter the IP address of the server in the Address field, enter the user name and password of the server administrator in the User Name and Password fields, and then click Connect.
- 3 Click the disclosure triangle for the server that will host NetBoot.
- 4 If NetBoot isn’t listed, select the server and click Settings. In the Services pane, select NetBoot and then click Save.
- 5 Select NetBoot, click Settings, and then click General.
- 6 In the network interface list, select the Enable checkboxes for the interfaces that you want to serve the AXD NetBoot images over.

If multiple network interfaces are listed, it’s likely that only one of the interfaces is on the same subnet as your Xserve. If you’re not sure which interface is on the same



subnet, open Network Utility (located in /Applications/Utilities/) on your NetBoot server and your Xserve. In the Info pane, choose different network interfaces on the NetBoot server and your Xserve and compare the IP Address fields. Usually, computers are on the same subnet if their IP addresses start with same few numbers (for example, they both start with 192.168.2).

- 7 In the volume list, select the Images and Client Data checkboxes for the volume that will store the AXD NetBoot image.  
The volume must have at least 15 MB free.
- 8 Click Save.
- 9 In the Finder, navigate to the AppleXserveDiagnostics folder on the *Admin Tools and Xserve Diagnostics* CD, and then open AppleXserveDiagnosticsNetBoot.pkg.
- 10 Follow the onscreen instructions to install the AXD NetBoot package.
- 11 In Server Admin, select NetBoot, and then click Images.
- 12 If the AXD NetBoot image has the same index (listed in the Index column) as another image, deselect the Enable checkbox for the conflicting image.
- 13 Click Start NetBoot.

## Deleting the AXD NetBoot Image

You can't use System Image Utility to delete the AXD NetBoot image. Instead, you must delete the AXD NetBoot image in the NetBoot image folder, which is located at:

```
/Volumes/volumename/Library/NetBoot/NetBootSP#
```

Replace *volumename* with the name of the volume that you're installing the AXD NetBoot image onto. The number (#) varies depending on whether you're using several NetBoot volumes. If you're using only one NetBoot volume, the AXD NetBoot image is located in NetBootSP0. If you're using several NetBoot volumes, the AXD NetBoot image may be located in another folder (for example, NetBootSP1, NetBootSP4, or NetBootSP11).

### To delete the AXD NetBoot image:

- Open the Finder and delete AXD.nbi from the NetBoot image folder.

## Setting Up a Storage Device for AXD Tool Installation

To set up an internal volume or portable storage device for AXD tool installation, you must have at least 15 MB of available space for AXD EFI tools or at least 7 GB of available space for AXD Mac OS X tools. These requirements are described in detail in "Storage Device Requirements" on page 6.

If you're installing AXD Mac OS X tools on one of the volumes, the storage device should use the GUID Partition Table partition scheme. To view the storage device's partition scheme, open Disk Utility, and select the storage device. Make sure you select the storage device and not a volume within the storage device. At the bottom of the Disk Utility window, Partition Scheme should say GUID Partition Table.

You can't use these instructions on any storage device that is currently in use. If you want to create empty volumes on a storage device that's currently running Mac OS X Server, you'll need to run Disk Utility from the Mac OS X installation DVD or run Disk Utility while your Xserve is connected to another computer and is in target disk mode. Both of these methods erase the contents of your Xserve's hard drive and require you to reinstall and reconfigure Mac OS X Server.

**WARNING:** The following instructions could erase all data on your storage device. Back up critical data before performing the following instructions.

**To create empty storage device volumes and correctly format them:**

- 1 Open Disk Utility (located in /Applications/Utilities/).  
Make sure you open Disk Utility on a computer with Mac OS X or Mac OS X Server version 10.5 or later installed.
- 2 Select the storage device that you want to set up.  
Make sure you select a storage device, and not volumes within the storage device. Volumes within a storage device are indented one level.
- 3 Click the Partition tab.
- 4 If the partition scheme of the storage device is not GUID Partition Table and you're going to install AXD Mac OS X tools, choose something besides "Current" in the Volume Scheme pop-up menu, then click Options, select GUID Partition Table, and click OK.  
Changing the volume scheme erases all data on the storage device.
- 5 Review the partition sizes and adjust them to meet AXD tools storage requirements.

To do this	Do this
Display a partition's size	Click the partition and review the Size field.
Set the size of the partition	Edit the Size field.
Create more partitions	Select a partition and click the Add (+) button.
Delete partitions	Select it and click the Delete (-) button.
Name a partition	Select it and enter a name in the Name field. Because this name is used when selecting which volume to start up Mac OS X in, choose a name that identifies the volume as being used for AXD tools. You can't rename old partitions.

- 6 Click Partition.

## Installing AXD EFI Tools

Before you install AXD EFI tools, make sure that your storage device has a volume that has at least 15 MB available, but doesn't have Mac OS X or Mac OS X Server installed. For more information, see "Setting Up a Storage Device for AXD Tool Installation" on page 9.

To perform these instructions, you'll need the *Admin Tools and Xserve Diagnostics* CD version 10.5 or later included with the Xserve. You can also download the latest *Admin Tools and Xserve Diagnostics* CD image from [www.apple.com/support](http://www.apple.com/support).

If you're performing this task to install AXD EFI tools on an internal volume on the Xserve, you'll need administrator access to the Xserve. If you're performing this task to install AXD EFI tools on a portable storage device, you can use any computer that you have administrator access to.

If you want to connect a host computer directly to the Xserve, and the host computer doesn't provide DHCP service on the port used to directly connect to the Xserve, you'll need to create a file on the Xserve that assigns an IP address to the Xserve. However, if the host computer provides DHCP service, don't create this file. For information about how to find out if a computer is providing DHCP service, see *Network Services Administration* at:

[www.apple.com/server/documentation](http://www.apple.com/server/documentation)

### To install AXD EFI tools:

- 1 Insert the *Admin Tools and Xserve Diagnostics* CD.  
If you have a disc image of the *Admin Tools and Xserve Diagnostics* CD, double-click the .dmg file to mount the disc image.
- 2 Open `AppleXserveDiagnosticsEFI.pkg` (located on the CD, in `/AppleXserveDiagnostics/`).
- 3 Follow the onscreen instructions, and at the Select Destination step, choose a volume that has at least 15 MB of space available and that doesn't have Mac OS X or Mac OS X Server installed.
- 4 If you're prompted to authenticate, authenticate as a user with administrator privileges.
- 5 If you want to connect a host computer directly to the Xserve and the host computer doesn't provide DHCP service on the port used to directly connect to the Xserve, do the following:
  - a Open `TextEdit` (located in `/Applications/`).
  - b In the body of a new file, enter an IP address that's not in use by the host computer.  
For example, enter:  
`123.123.123.123`  
If `TextEdit` doesn't open with a new blank file, choose `File > New`.

- c Choose Format > Make Plain Text.
- d Choose File > Save As.
- e Name the file `axd_set_ip_address`, and then change the location of the file to the volume with AXD EFI tools installed.
- f Select “If no extension is provided, use `.txt`,” and then click Save.

## Installing AXD Mac OS X Tools

Before you install AXD Mac OS X tools, make sure that your storage device uses the GUID Partition Table partition scheme and that it has an empty volume with 7 GB of available space. For more information, see “Setting Up a Storage Device for AXD Tool Installation” on page 9.

To perform these instructions, you’ll need the *Admin Tools and Xserve Diagnostics* CD version 10.5 or later included with the Xserve. You can also download the latest *Admin Tools and Xserve Diagnostics* disc image from [www.apple.com/support](http://www.apple.com/support).

If you’re performing this task to install AXD Mac OS X tools on an internal volume on the Xserve, you’ll need administrator access to the Xserve. If you’re performing this task to install AXD Mac OS X tools on a portable storage device, you can use any computer that you have administrator access to.

Installing AXD Mac OS X tools involves three major steps:

- Install Mac OS X Server with minimal options selected
- Copy AXD Mac OS X tools from the *Admin Tools and Xserve Diagnostics* CD to `/Applications/`
- Configure Mac OS X Server

By dedicating a minimal installation of Mac OS X Server for use with AXD Mac OS X tools, you reduce the risk of server processes interrupting AXD testing.

### To install AXD Mac OS X tools:

- 1 Insert the Mac OS X Server Install DVD.
- 2 Open the Install Mac OS X Server application, click Restart, and authenticate, if requested.

The computer restarts and opens the Mac OS X Server Installer.

- 3 Continue through the Installer until you reach the Select Destination step.
- 4 Select a volume that’s at least 7 GB. If the volume isn’t empty, click Options, select “Erase and Install,” and then click OK. Click Continue.
- 5 In Installation Type, click Customize, deselect all checkboxes, and then click Install.

If the volume is very close to 7 GB in size, the Installer might automatically load the Customize list.

When the Installer finishes installing Mac OS X Server, the computer restarts and the Mac OS X Server setup assistant opens.

- 6 In the Server Configuration step of the setup assistant, select Advanced.
- 7 Continue through the setup assistant and enter information as requested. Don't enable any services.

When you finish entering information in the setup assistant, the login window appears.

- 8 Log in with the user name "root" and the password of the user you created in the setup assistant.

You must set up and run AXD Mac OS X tools as root. Otherwise, you won't be able to test the Xserve you've installed AXD Mac OS X tools on.

- 9 Insert the *Admin Tools and Xserve Diagnostics* CD.

If you have a disc image of the *Admin Tools and Xserve Diagnostics* CD, double-click the .dmg file to mount the disc image.

- 10 Open the Finder and drag the AXD.app file from /AppleXserveDiagnostics/ on the *Admin Tools and Xserve Diagnostics* CD to your /Applications/ folder.
- 11 If you're setting up a client Xserve, open the Finder, select your /Applications/ folder, click the Gear button, and choose New Folder. Name the folder AXDClient.

Client Xserves are remotely controlled by host computers.

- 12 Open System Preferences (located in /Applications/). Change the following options in System Preferences panes:

System Preferences pane	Recommended configuration
Accounts	Select the System Administrator account, and click Login Items. Click Add (+), select /Applications/AXD.app, and click Add.
CDs & DVDs	In all pop-up menus, choose Ignore.
Desktop & Screen Saver	In the Screen Saver pane, drag the "Start screen saver" slider to Never.
Energy Saver	In the Sleep pane, drag both sliders to Never, and deselect "Put hard disk(s) to sleep when possible."
Exposé and Spaces	In the Exposé pane, in all pop-up menus, choose "-." In the Spaces pane, deselect Enable Spaces.
Software Update	In the Scheduled Check pane, deselect "Check for updates."

If you can't change settings in System Preferences, click the lock button and authenticate.

After installing the AXD Mac OS X tools, you must log in as root to run AXD tools to test your own Xserve. If you don't log in as root, AXD Mac OS X tools enters host mode and waits for a connection to a client Xserve to control.

This chapter describes several methods that let you change the startup disk to the volume with AXD tools installed.

Before you start up AXD tools, make sure you've properly installed and configured the tools. For more information, see Chapter 2, "Setup and Installation," on page 8.

## Changing the Startup Disk

If you want to test a client Xserve remotely, you'll need to first start up AXD tools on the host computer, and then start up AXD tools on the client Xserve.

To start up AXD tools, set the startup volume of the Xserve to the volume or disk image containing AXD tools. If Mac OS X Server starts up by default on your Xserve, you can change the startup disk in Startup Disk System Preferences. Otherwise, you can temporarily change the startup disk by pressing and holding one of several keys when starting up the Xserve:

Goal	Press and hold this key at Xserve startup
Choose the AXD tools volume before starting up Mac OS X	Option
Start up the AXD EFI tools located on the <i>Admin Tools and Xserve Diagnostics</i> CD	D (make sure the <i>Admin Tools and Xserve Diagnostics</i> CD is inserted)
Start up using the AXD EFI tools disk image from a NetBoot server	F1 or a specific combination of the Xserve's front panel buttons

Startup Disk System Preferences can start up only AXD Mac OS X tools. Pressing the Option key at startup lets you start up either AXD EFI tools or AXD Mac OS X tools.

The Xserve becomes unavailable whenever you use AXD. Before starting tests, alert your users that the server will be unavailable.

## Changing the Startup Disk in System Preferences

If Mac OS X Server starts up by default on your Xserve, you can use System Preferences to change the startup disk. The list of startup volumes includes internal volumes and connected portable storage device volumes.

When you change the startup disk in System Preferences, you can't select a startup disk with AXD EFI tools installed. To change the startup disk to the volume with AXD EFI tools installed, change the startup disk at startup. For more information, see "Changing the Startup Disk Temporarily at Startup" on page 16.

**To change the startup disk in System Preferences:**

- 1 Open System Preferences on the Xserve, and then select Startup Disk.
- 2 If the lock icon is locked, click it, and then authenticate as a system administrator.
- 3 Select the startup disk with the AXD tools and click Restart.

After you're done using AXD tools, change the startup disk back to the volume you were previously using.

## Changing the Startup Disk Using the Command-Line Interface

If Mac OS X Server starts up by default on your Xserve, you can use the command-line interface to change its startup disk. You can use the command-line interface to start up from internal volumes and connected portable storage device volumes.

You can also change the startup disk of a remote server using the command-line interface. Remote login must be enabled on the remote server (enabled by default). You can enable remote login in the Sharing pane of System Preferences.

When you change the startup disk using the command-line interface, you can't select a startup disk with AXD EFI tools installed. To change the startup disk to the volume with AXD EFI tools installed, change the startup disk at startup. For more information, see "Changing the Startup Disk Temporarily at Startup" on page 16.

You'll need to be able to authenticate as the root account to change the startup disk in the command-line interface.

**Note:** The Terminal commands described in this task are case-sensitive and must be entered as shown.

**To change the startup disk using the command-line interface:**

- 1 Open Terminal (located in /Applications/Utilities/).
- 2 If you want to connect to a remote server, enter the following in the Terminal window, and authenticate when requested:

```
ssh username@serveraddress
```

Replace *username* with the short name of a user who can authenticate as the root account on the server. Replace *serveraddress* with the URL, IP address, or host name of the server.

- 3 Enter the following, and authenticate as the root account when requested:

```
sudo bless -folder "/Volumes/volumentname/System/Library/CoreServices"  
-setBoot
```

Replace *volumentname* with the name of the volume you want to start up from.

When you're done using AXD tools, change the startup disk back to the volume you were using previously.

## Changing the Startup Disk Using Apple Remote Desktop

If you have Apple Remote Desktop, you can change the startup disk of remote computers to an internal volume or connected portable storage device volume.

For information about using Apple Remote Desktop to set a computer's startup disk, see *Apple Remote Desktop Administrator's Guide*, located at:

[www.apple.com/server/documentation](http://www.apple.com/server/documentation)

## Changing the Startup Disk Temporarily at Startup

If your Xserve has trouble starting up with Mac OS X Server or doesn't have Mac OS X Server installed, you can temporarily change the startup disk by pressing and holding a key while the Xserve is starting up. This method requires that you have a keyboard and mouse attached to the Xserve and that you can restart the Xserve.

If you don't have a keyboard and mouse attached to the Xserve, use the instructions in the next section, "Starting Up an AXD EFI Tools NetBoot Image Using the Xserve's Front Panel."

If a firmware password is set, you can't temporarily change the startup disk by pressing and holding the D or F1 key. You can temporarily change the startup disk by pressing and holding the Option key, but you must authenticate with the firmware password.

For information about disabling the firmware password, see "Disabling the Firmware Password" on page 19.

### To temporarily change the startup disk at startup:

- 1 Restart the Xserve.
- 2 While the Xserve is restarting, press and hold the Option key until a list of volumes appears. If you're asked to authenticate, enter the firmware password and click the Continue (right-arrow) button.

If you have the *Admin Tools and Xserve Diagnostics* CD inserted, you can start up using AXD EFI tools located on the CD by pressing and holding the D key instead of the Option key.



If you want to start up AXD tools from a NetBoot image hosted on a NetBoot server, press and hold the F1 key instead of the Option key.

Both of these alternatives immediately start up AXD EFI tools and bypass the list of volumes described in the next step.

- 3 If you displayed the list of volumes instead of immediately starting up AXD tools, select the volume with AXD tools, and then click the arrow button to start up.

The AXD EFI tools volume is listed as AXD EFI 3X103.

After you're done using AXD EFI tools and restart the Xserve, it starts up using the default startup volume.

## Starting Up an AXD EFI Tools NetBoot Image Using the Xserve's Front Panel

You can use the Xserve's front panel buttons to start up an AXD EFI tools disk image hosted by a NetBoot server. This technique is useful for situations where your Xserve:

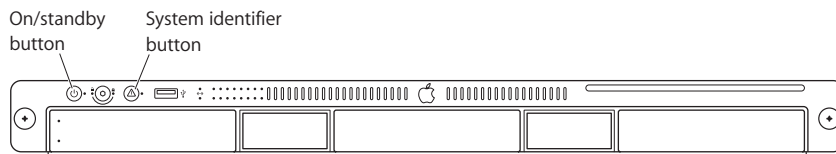
- Doesn't have a monitor or keyboard attached
- Doesn't respond to keyboard input
- Doesn't have Mac OS X Server installed

The Xserve must be on the same subnet as the NetBoot server hosting the AXD EFI tools disk image.

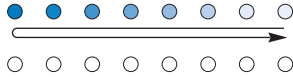
If the Xserve's EFI requires a password, you won't be able to start up a NetBoot image using the front panel. You'll need to disable the firmware password before you can use the front panel. To disable the password, you must be able to start up Mac OS X Server on the Xserve.

**To use the Xserve's front panel to start up an AXD EFI tools NetBoot image:**

- 1 Turn off the Xserve.
- 2 Press and hold the system identifier button and press the on/standby button.



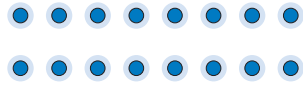
- 3 Continue holding the system identifier button until the top row of lights move right to left. Release the system identifier button.



Top row of lights blink right to left, then left to right.

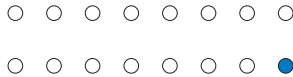
If the two rows of lights on the front panel blink once and the Xserve resumes its startup sequence, a firmware password is enabled. You'll need to disable the password.

For information about disabling the firmware password, see the next section, "Disabling the Firmware Password."



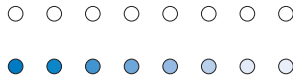
Both rows of lights blink once.  
Disable the firmware password.

- 4 When you release the system identifier button, the rightmost light in the bottom row should turn on.



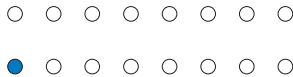
Bottom, rightmost light comes on.

- 5 Press the system identifier button again. The lights in the bottom row should now be moving right to left.



Bottom row of lights blink right to left.

- 6 Press the button repeatedly until the leftmost light in the bottom row turns on.



Bottom, leftmost light comes on.

- 7 When the leftmost light is on, press and hold the system identifier button until all the lights in the top row are on. Release the system identifier button.



Top row of lights come on.

When you release the button, the Xserve starts up using the AXD EFI tools NetBoot disk image.

After you've run AXD EFI tools and restart, the Xserve starts up using its default startup volume.

### Disabling the Firmware Password

If a firmware password is enabled, you can't:

- Start up from an AXD EFI tools NetBoot image using the Xserve's front panel
- Temporarily change the startup volume by pressing and holding F1 or D at startup

If a firmware password is enabled and you try to temporarily change the startup volume by pressing and holding Option at startup, you must authenticate.

#### To disable the firmware password:

- 1 Insert the Mac OS X Server Install DVD.
- 2 Open the Install Mac OS X Server application, click Restart, and authenticate, if requested.  
The computer restarts and opens the Mac OS X Server Installer.
- 3 After selecting a language, choose Utilities > Firmware Password Utility.
- 4 In Firmware Password Utility, click Change.
- 5 Deselect "Require password to change firmware settings," and click OK. Authenticate when asked.
- 6 Choose Firmware Password Utility > Quit Firmware Password Utility.
- 7 Choose Mac OS X Installer > Quit Mac OS X Installer. Click Startup Disk, select the startup disk with Mac OS X Server installed, and then click Restart.

AXD Mac OS X tools and AXD EFI tools have different interfaces and functionality. This chapter describes how to use both AXD tools.

Before you can use AXD tools, make sure you've properly started up the tools. For more information, see Chapter 3, "Starting Up AXD Tools," on page 14.

## Setting AXD to Host, Client, or Local Mode

When AXD tools starts, AXD tools can enter one of three modes depending on whether:

- You're opening AXD EFI tools or AXD Mac OS X tools
- Any of the computers on the same subnet are host computers
- A host computer is directly connected
- You're logged in as root
- You're running AXD Mac OS X tools on a computer that isn't an Intel-based Xserve

The following table describes the three modes:

Mode	Description	Automatically enters mode if
Host	The computer searches for Xserves that are on the same subnet and start AXD tools in remote mode. When one is found, the host computer controls the client Xserve's AXD tools.	You run AXD Mac OS X tools and either: <ul style="list-style-type: none"><li>• The computer isn't an Intel-based Xserve.</li><li>• You're not logged in as root.</li></ul>
Client	The Xserve can be controlled by a host computer.	You're running AXD EFI tools and a host computer is on the same subnet or is directly connected.
Local	The Xserve runs all tests locally.	You're running AXD EFI tools and a host computer isn't on the same subnet and isn't directly connected.

If you're logged in as root on an Intel-based Xserve, and then you run AXD Mac OS X tools, you can choose which mode to enter.

## Remotely Testing a Client Xserve

If you want to test a client Xserve, you must first start up AXD tools on the host computer, set it to connect to a client Xserve, and then start up the AXD tools on the client Xserve and set it to be a client of a remote host.

The host computer must run AXD Mac OS X tools. The client Xserve can run AXD EFI tools or AXD Mac OS X tools. The available tests are based on which AXD tools the client Xserve is running.

When you start up AXD EFI tools, the Xserve first looks for a host computer. If it finds a host computer, the Xserve enters client mode. If it doesn't find a host computer, the Xserve enters local mode.

When you start up AXD Mac OS X tools, the Xserve automatically becomes a host computer if either of the following are true:

- You logged in to Mac OS X with an account that isn't root.
- You are running AXD Mac OS X tools on a computer that isn't an Intel-based Xserve.

If AXD Mac OS X tools doesn't automatically become a host computer, it asks if it should connect to a client Xserve, be a client of a remote host, or run tests locally.

### To remotely test a client Xserve:

- 1 On the host computer, open AXD Mac OS X tools (located in /Applications/).
- 2 If the host computer is an Intel-based Xserve and you're logged in as root, when AXD opens, a dialog asks you to choose which mode to enter. Choose "Connect to remote Xserve" and click OK.  
If your computer isn't an Intel-based Xserve, the dialog doesn't appear, and AXD automatically enters host mode.
- 3 On the client Xserve, change the startup disk to a volume with AXD tools and restart it. You can also temporarily change the startup disk to either a volume with AXD tools on it or to an AXD tools NetBoot disk image when you start up the Xserve.  
For more information about how to change or temporarily change the startup volume, see Chapter 3, "Starting Up AXD Tools," on page 14.
- 4 If you're starting up AXD Mac OS X tools, log in as root, and if AXD doesn't open automatically, open AXD (located in /Applications/). Choose "Client of a remote host," and click OK.
- 5 If you're starting up AXD EFI tools, the Xserve automatically enters client mode.

There are several ways to determine whether the host computer and client Xserve have established a successful connection:

- The IP address field in the AXD window on the host computer should match the IP address assigned to the client Xserve.
- The name of the AXD window on the host computer is “AXD remote log,” not “AXD local log.”
- The log area of the client Xserve uses more of the AXD window. The Shut Down, Restart, and a few other buttons are removed.

### Testing the Local Xserve Using AXD EFI Tools

To test the local Xserve, make sure none of the computers on the same subnet as the Xserve is running AXD Mac OS X tools in host mode. If a computer on the same subnet is running AXD Mac OS X tools in host mode, the Xserve automatically enters client mode.

#### To test the local Xserve using AXD EFI tools:

- Restart the Xserve and press and hold a key, or use the Xserve’s front panel buttons to start up the volume or NetBoot disk image with AXD EFI tools.

For more information about how to temporarily change the startup volume while starting the computer, see Chapter 3, “Starting Up AXD Tools,” on page 14.

When AXD EFI tools starts up and doesn’t find a host computer, it enters local mode.

### Testing the Local Xserve Using AXD Mac OS X Tools

To test the local Xserve, you must log in as root. If you don’t log in as root, AXD Mac OS X tools automatically enters host mode.

#### To test the local Xserve using AXD Mac OS X tools:

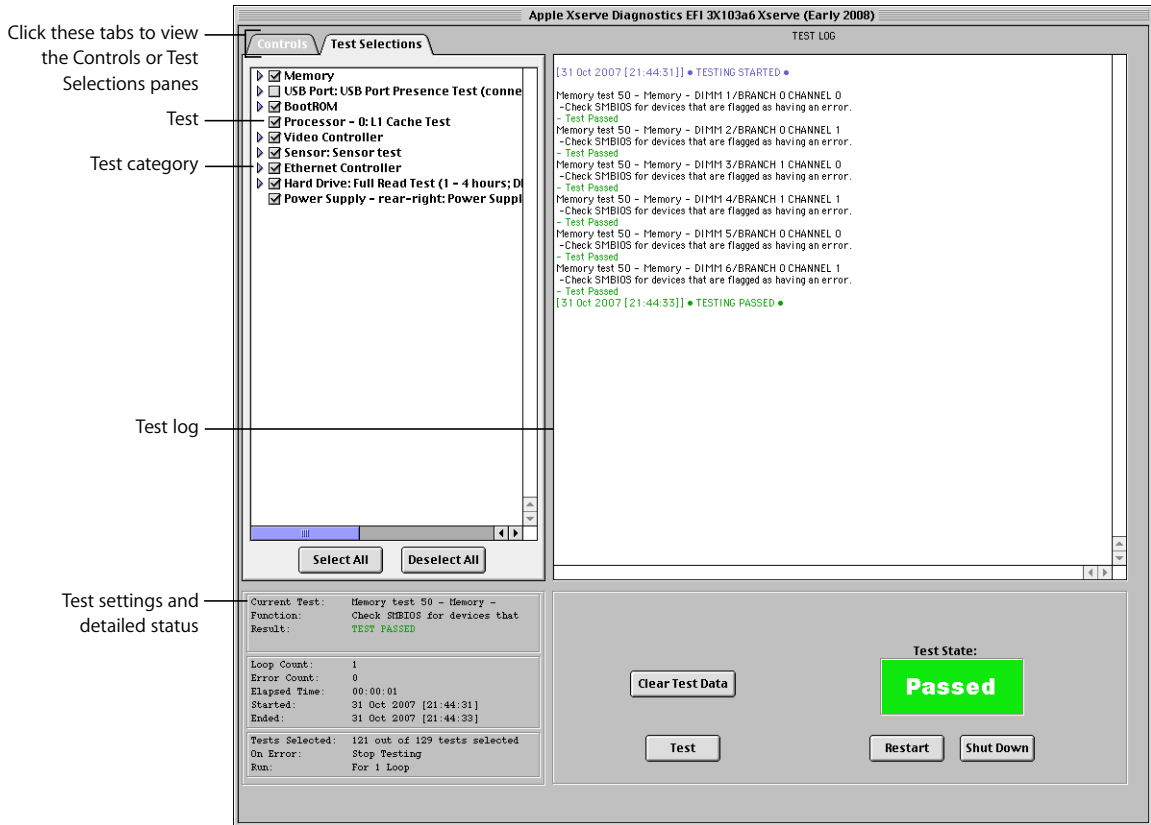
- 1 Change the startup disk of the Xserve to a volume with AXD Mac OS X tools, restart it, and log in as root.
- 2 If AXD Mac OS X tools doesn’t open automatically, open it (located in /Applications/).
- 3 When AXD opens, choose “Local” from the dialog that appears and click OK.

## Using AXD EFI Tools

In AXD EFI tools, the test controls and test selections are split across two panes. Regardless of which pane you’re looking at, you can do the following:

- View the test log, test settings, and status
- Start tests
- Clear the test log
- Restart the Xserve

- Shut down the Xserve



For information about AXD EFI tools, see the following topics:

- “Customizing AXD EFI Tools Test Settings” on page 23
- “Clearing the Test Log” on page 24
- “Viewing the Hardware Profile” on page 24
- “Shutting Down or Restarting the Xserve” on page 24

## Customizing AXD EFI Tools Test Settings

You can customize AXD test settings in several ways by choosing which tests are run, whether to loop tests, and whether to stop or continue testing when an error occurs.

## To customize AXD EFI tools test settings:

- 1 In AXD EFI tools, select the test settings you want.

To do this	Do this
Choose which tests are run	In the Test Selections pane, do the following: <ul style="list-style-type: none"><li>• To select a test, select the checkbox next to the test.</li><li>• To select a specific test within a category of tests, click the disclosure triangle next to the category, and then select individual tests.</li><li>• To select all tests, click Select All.</li><li>• To remove all tests, click Deselect All.</li></ul>
Loop all selected tests	In the Controls pane, do the following: <ul style="list-style-type: none"><li>• To loop all selected tests a specific number of times, select “Loop # times” and replace # with the number of times to loop.</li><li>• To run all tests once, select “Loop # times” and replace # with the number 1.</li><li>• To loop all tests for a specific amount of time, select “Loop for # hours and # minutes” and replace # with number of hours and minutes to loop. When the specified time is reached, the current loop must complete before the tests stop. For example, if one loop of your test set takes 2 hours to complete, and your specified time is 3 hours, AXD stops testing in 4 hours. (Instead of stopping at 3, it waits for the current test set loop to complete before stopping.)</li></ul>
Change what to do when an error occurs	In the Controls pane, do the following: <ul style="list-style-type: none"><li>• To stop testing when the first error occurs, select Stop On Error.</li><li>• To continue testing when errors occur, choose Continue On Error.</li></ul>

- 2 To run the test, click Test.

## Clearing the Test Log

The test log contains all test messages that have occurred during the current AXD session. If you quit AXD, the log is cleared.

To clear the test log without quitting AXD, click Clear Test Data.

## Viewing the Hardware Profile

The hardware profile lists all hardware components in the Xserve.

You can view the hardware profile by choosing Hardware Profile > Display Hardware Profile.

## Shutting Down or Restarting the Xserve

You can shut down or restart the Xserve in AXD EFI tools.

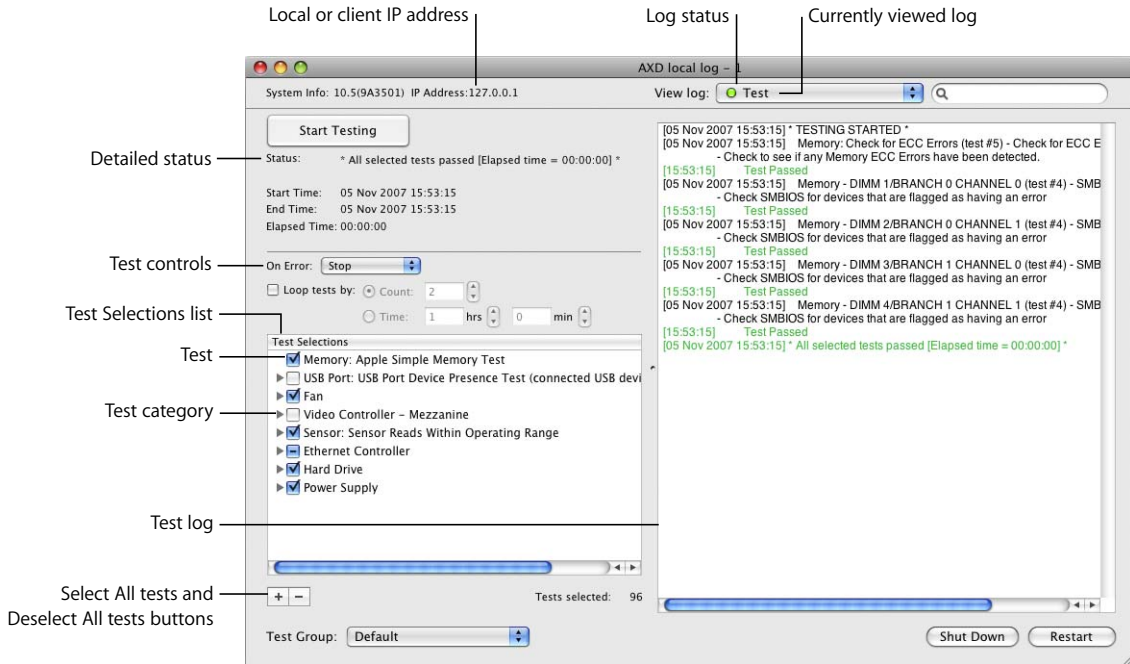
To shut down or restart the Xserve, click Shut Down or Restart.



## Using AXD Mac OS X Tools

AXD Mac OS X tools changes its look based on whether you're running it locally, as a client, or as a host. In client mode, you can't change test settings, select different tests, or shut down or restart the Xserve. Therefore, the test log uses most of the window.

In local and host mode, you can access all AXD Mac OS X features in the main window.



For information about using AXD Mac OS X Tools, see the following topics:

- "Customizing AXD Mac OS X Tools Test Settings" on page 25
- "Working With Test Groups" on page 26
- "Viewing Logs" on page 27
- "Shutting Down or Restarting the Xserve" on page 30
- "Quitting AXD Mac OS X Tools While a Test is Running" on page 30

## Customizing AXD Mac OS X Tools Test Settings

You can customize AXD test settings in several ways by choosing which tests are run, whether to loop tests, and whether to stop or continue testing when an error occurs.

### To customize AXD Mac OS X tools test settings:

- 1 In AXD Mac OS X tools, select the test settings you want.

To do this	Do this
Choose which tests are run	In the Test Selections list, do the following: <ul style="list-style-type: none"><li>• To select a test, select the checkbox next to the test.</li><li>• To select a specific test within a category of tests, click the disclosure triangle next to the category, and then select individual tests.</li><li>• To select all tests, click the Select All (+) button.</li><li>• To remove all tests, click the Deselect All (-) button.</li></ul>
Loop all selected tests	Select “Loop tests by,” and then do the following: <ul style="list-style-type: none"><li>• To loop all selected tests a specific number of times, select Count and enter a number of times to loop.</li><li>• To loop all selected tests for a specific amount of time, select Time and enter the number of hours and minutes to loop. When the specified time is reached, the current loop must complete before the tests stop. For example, if one loop of your test set takes 2 hours to complete and your specified time is 3 hours, AXD stops testing in 4 hours. (Instead of stopping at 3, it waits for the current test set loop to complete before stopping.)</li></ul>
Change what to do when an error occurs	In the On Error pop-up menu, do the following: <ul style="list-style-type: none"><li>• To stop testing when the first error occurs, choose Stop.</li><li>• To continue testing when errors occur, choose Continue.</li></ul>

- 2 To save your customized test settings for future use, in the Test Group pop-up menu, choose Save Current Group. Enter a name for the group and click OK.

For more information, see the next section, “Working With Test Groups.”

- 3 To run the test, click Start Testing.
- 4 When the test completes, a PASSED or FAILED message appears on screen. Click anywhere to close the message.

If you stop the test before it completes, no message appears.

### Working With Test Groups

You can create test groups based on your customized test settings. These are similar to templates because they allow you to reuse your test settings without having to change each setting individually. After choosing a test group, you can still change its settings.

There are two sets of test groups, which change based on the type of AXD tools run by the Xserve. If you’re testing a client Xserve that’s running AXD EFI tools, the test groups are different than if you’re testing an Xserve running AXD Mac OS X tools.

When you create or delete a test group, that test group is created or deleted in the set of test groups you're currently using. For example, if you create a test group for Xserves running AXD Mac OS X tools, it doesn't become available for Xserves running AXD EFI tools.

There are several test groups included with AXD. These test groups stop when an error occurs and aren't looped.

Tool used	Test group	Test selections
AXD Mac OS X tools	Default	All memory, fan, hard drive, sensor, and power supply tests. Ethernet MAC address verification and ROM checksum verification.
AXD Mac OS X tools	Quick Test	All sensor tests.
AXD EFI tools	Default	All memory, boot ROM, processor, video controller, sensor, Ethernet controller, hard drive, and power supply tests.
AXD EFI tools	Quick Test	Extended memory test P007 and all sensor tests.

You can also export a test group to a file. By exporting a test group, you can use that file to re-create that test group on other AXD installations. For example, if you install AXD Mac OS X tools on several Xserves, you can copy the test group file to each of those Xserves, making identical tests available without having to manually create a new test group.

#### To work with test groups:

- In AXD Mac OS X tools, choose the options you want.

To do this	Do this
Use a test group	In the Test Group pop-up menu, choose a test group.
Create a new test group	In the Test Group pop-up menu, choose Save Current Group. Enter a name for the group and click OK.
Delete a test group	In the Test Group pop-up menu, choose a test group. Choose Edit > Delete Test Group. You can't delete the Default or Quick Test test groups.
Export a test group	Choose File > Export Test Group, choose a location, name the test group, and click Save.
Import a test group	Choose File > Open, select an .axdconfig file, and click Open.

## Viewing Logs

You can view the following types of logs in AXD Mac OS X tools:

Log type	Description
Test	All messages from tests run in the current AXD Mac OS X tools session

Log type	Description
Hardware Info	Listing and description of all installed hardware
System	All of the logs that are also available in System Profiler (located in /Applications/Utilities/)

You can also view logs stored on other volumes. This is useful for:

- Starting up AXD Mac OS X tools from a USB drive or a CD, and viewing logs stored on the Xserve's startup volume
- Diagnosing issues that you run into while you're not using AXD

When you view logs in AXD Mac OS X tools, AXD shows a colored circle next to the log name to indicate whether it's able to load the log.

Color	Status
No circle	You haven't loaded the log during this AXD session, or the log hasn't been created yet.
Yellow	The log didn't load. This usually occurs when there isn't any data in the log.
Green	The log loaded.

#### To view logs:

- 1 Open AXD Mac OS X tools.
- 2 If tests are currently running, wait for them to complete or stop them.  
If tests are running, you can view only the test log.
- 3 Do any the following:

To do this	Do this
Choose a different volume to view logs on	Choose Logs > View Different System's Logs, choose a volume from the "Volume to gather system logs from" pop-up menu, and click OK.
View logs in the current or chosen volume	Choose a log from the "View log" pop-up menu.
Search for specific text within the log	Enter text in the search field. When you press Return, matching text is highlighted in the log area.
Clear logs	Choose Logs > Clear <i>current</i> Log or choose Logs > Clear All Logs. The name of the currently viewed log replaces <i>current</i> .
Refresh logs	Choose Logs > Refresh Current Log or choose Logs > Refresh All Information Logs.

## Setting Log Preferences

You can set up log preferences so that the AXD test logs are automatically saved to a file at a location you choose. AXD test logs are created every time you start a new AXD session.

When AXD Mac OS X tools saves a log, it overwrites any existing log of the same name. Log preferences can automatically customize the name of the log file so that the log files aren't overwritten.

If you don't use any of the naming options, the log is saved as:

`AXD_mode_autosave_log.txt`

If you are testing locally, *mode* is replaced by "local." If you are testing remotely, *mode* is replaced by "remote."

If you use all of the naming options, the log is saved as:

`AXD_mode_autosave_log_date_ethernetaddress_uniquename.txt`

The appended values use this format:

Value	Format	Example
<i>date</i>	DD_Mon_Year	15_Jul_2007
<i>ethernetaddress</i>	##_##_##_##_##_##	01_23_45_67_89_ab
<i>uniquename</i>	- #	- 1

The unique name will be appended only if a file of the same name exists.

A log for the local Xserve with all naming options enabled (using the example values) is saved as:

`AXD_local_autosave_log_15_Jul_2007_01_23_45_67_89_ab - 1.txt`

#### To set log preferences:

- 1 In AXD Mac OS X tools, choose AXD > Preferences.
- 2 To automatically save test logs, select "Auto-save test log."  
If you don't select this option, you can't perform the steps that follow.
- 3 To choose the location of the automatically saved log, click "Choose auto-save location," select a location, and then click Open.
- 4 Configure the test log naming options.

To do this	Do this
Ensure newly created log files don't overwrite old log files	Select "Use unique name."
Append the Ethernet address of the Xserve that's being tested	Select "Append Ethernet Address."
Append the run time and date of the session's first tests	Select "Append time and date."

## Shutting Down or Restarting the Xserve

If you're running AXD Mac OS X tools on the local Xserve, or on a host computer, you can shut down or restart the Xserve. However, if the Xserve is in client mode, you can't shut down or restart the Xserve locally.

To shut down or restart the Xserve, click Shut Down or Restart.

## Quitting AXD Mac OS X Tools While a Test is Running

If you try to quit AXD Mac OS X tools while a test is running, you won't be able to print or save any logs from the current AXD session. Make sure you print or save any critical logs before quitting.

Instead of quitting in the middle of a test, you can stop the current test, print or save logs, and then quit.

# AXD Tools Test Reference

This reference describes all the tests available in AXD and gives estimates for how long the tests take to complete.

The types of tests available depend on if you're using AXD EFI tools or AXD Mac OS X tools.

## Comparison of Available Tests

The following table compares the tests available by component, depending on if you're using AXD EFI tools or AXD Mac OS X tools. For more information about the specific tests available for each component, see "AXD EFI Tools Tests" on page 32 and "AXD Mac OS X Tests" on page 36.

A ✓ signifies that a test is available, and a blank entry signifies that there are no available tests:

Component tested	Available in AXD EFI tools	Available in AXD Mac OS X tools	Notes
Boot ROM	✓		
Ethernet controller	✓	✓	Different tests are available depending on the tool.
Fan		✓	
Hard drive	✓	✓	Different tests are available depending on the tool.
Memory (simple)	✓		Tests only the first 2.5 GB of memory.
Memory (multicore)	✓	✓	Tests the first 2.5 GB of memory but using all available CPU cores.
Memory (extended)	✓		Tests all memory.
Power supply	✓	✓	
Sensor	✓	✓	AXD Mac OS X tools has an additional sensor test.

Component tested	Available in AXD EFI tools	Available in AXD Mac OS X tools	Notes
USB port	✓	✓	
Video controller	✓	✓	AXD Mac OS X tools have more tests than AXD EFI tools.

## AXD EFI Tools Tests

These tests are available if your Xserve is running AXD EFI tools.

### Startup Tests

These tests are automatically run when you start up AXD EFI tools.

SMBIOS tests check to see if bad memory was detected and mapped out at Xserve startup. When the Xserve tests memory at start up, it automatically maps out bad memory. Mac OS X doesn't see this mapped out memory, so the non-SMBIOS memory tests don't test it. The SMBIOS test reports these mapped out DIMMS.

When an ECC error occurs, memory catches the problem and fixes it. When you run other memory tests, the tests don't realize an error has occurred. The ECC tests detect these memory fixes and report them.

Test	Estimated completion time	Description
SMBIOS Self-Test	1 second	Checks the SMBIOS tables for 32-bit errors (type 18) and 64-bit errors (type 33). Also verifies that the mapped-in DIMM size is appropriate for the slot it's inserted into. If there's a size mismatch, an error occurs.
ECC Error Count	1 second	Reports the number of ECC errors, and then resets the count

### Boot ROM Tests

Test	Estimated completion time	Description
Boot ROM Checksum	1 second	Verifies the Boot ROM checksum
Boot ROM FW GUID MAC Addr Checksum	1 second	Verifies the Boot ROM FireWire GUID MAC address checksum

### Ethernet Controller Tests

Test	Estimated completion time	Description
MAC Address Verification	1 second	Verifies MAC address isn't all FFs or 00s
PCI-E 4 LinkWidth Verification	1 second	Verifies PCI link width is 4



## Hard Drive Tests

Test	Estimated completion time	Description
Full Read	30 minutes for an 80 GB drive; 4 hours for a 750 GB drive	Performs a DMA full-read scan at 1250 RPM. This checks the entire hard drive for slow-read failures.

## Memory (Simple) Tests

Simple memory tests test the first 2.5 GB of memory. To test all memory, run extended memory tests.

Even though simple memory tests don't test all memory, run these tests to detect intermittent memory issues.

In AXD EFI tools, all memory tests (simple, multicore, and extended) are grouped under Memory tests.

**Note:** The time required to complete memory tests correlates to the size of memory being tested. These estimates are based on testing 1 GB of memory.

Test	Estimated completion time	Description
Address as Data	5 seconds	Tests memory using the memory address as data
Patterns	25 seconds	Tests memory using different data patterns
Marching Ones and Zeros	15 seconds	Tests memory by walking 1s and 0s up and down memory
Knaizuk Hartmann	10 seconds	Tests memory using this algorithm
MOD3	30 seconds	Tests memory using this algorithm
Van de Goor's March U	2 minutes	Tests memory using this algorithm
Random Values	15 seconds	Uses pseudo-random values
Block Checkerboard 32	10 seconds	Alternates 32-bit words with all 1s and all 0s, and then with all 0s and all 1s
Bit Checkerboard 32	10 seconds	Alternates bits with all 1s and all 0s, and then with all 0s and all 1s
Sequential Byte Block 32	14 minutes	Fills all bytes sequentially with patterns starting at 0x00 and ending at 0xFF
Walking One 32	5 minutes	Walks 1s up and down memory
Walking Zero 32	5 minutes	Walks 0s up and down memory

Test	Estimated completion time	Description
Walking Spread Bit 32	5 minutes	Walks 0b01 up and then walks 0b10 down memory
Walking Bit Flip 32	5 minutes	Alternates words with walking 1 and walking 0, and then alternates with walking 0 and walking 1

## Memory (Multicore) Tests

Multicore memory tests test the first 2.5 GB of memory using all available CPU cores.

In AXD EFI tools, all memory tests (simple, multicore, and extended) are grouped under Memory tests.

**Note:** The time required to complete memory tests correlates to the size of memory being tested. These estimates are based on testing 1 GB of memory.

Test	Estimated completion time	Description
MP Block Checkerboard 32	5 seconds	Alternates 32-bit words with all 1s and all 0s, and then with all 0s and all 1s
MP Bit Checkerboard 32	5 seconds	Alternates bits with all 1s and all 0s, and then with all 0s and all 1s
MP Sequential Byte Block 32	8 minutes	Fills all bytes sequentially with patterns starting at 0x00 and ending at 0xFF
MP Walking One 32	2 minutes	Walks 1s up and down memory
MP Walking Zero 32	2 minutes	Walks 0s up and down memory
MP Walking Spread Bit 32	2 minutes	Walks 0b01 up and then walks 0b10 down memory
MP Walking Bit Flip 32	2 minutes	Alternates words with walking 1 and walking 0, and then alternates words with walking 0 and walking 1

## Memory (Extended) Tests

Extended memory tests test all available memory.

In AXD EFI tools, all memory tests (simple, multicore, and extended) are grouped under Memory tests.

**Note:** The time required to complete memory tests correlates to the size of memory being tested. These estimates are based on testing 1 GB of memory

Test	Estimated completion time	Description
Extended Memory Test P00F	5 seconds	Tests memory using pattern 0. This fails if an error occurs.
Extended Memory Test P01F	5 seconds	Tests memory using pattern 1. This fails if an error occurs.

Test	Estimated completion time	Description
Extended Memory Test P02F	5 seconds	Tests memory using pattern 2. This fails if an error occurs.
Extended Memory Test P03F	5 seconds	Tests memory using pattern 3. This fails if an error occurs.
Extended Memory Test P04F	5 seconds	Tests memory using pattern 4. This fails if an error occurs.
Extended Memory Test P05F	5 seconds	Tests memory using pattern 5. This fails if an error occurs.
Extended Memory Test P06F	5 seconds	Tests memory using pattern 6. This fails if an error occurs.
Extended Memory Test P07F	5 seconds	Tests memory using pattern 7. This fails if an error occurs.

## Power Supply Tests

Test	Estimated completion time	Description
Good Bit	1 second	Checks if the power supply's good bit is set. If it's not set, this could indicate that the power supply isn't seated well, is bad, or that there's no AC connected.
Quick	5 seconds	This is available only if you have more than one power supply. This turns off the redundant power supplies so that only one power supply is used.

## Processor Tests

Test	Estimated completion time	Description
L1 Cache Test	1 second	Verifies that the L1 cache is good on all processor cores

## Sensor Tests

Test	Estimated completion time	Description
Sensor Reads	1 second	Verifies that the sensor reads are within the preset sensor limits

## USB Tests

Connect USB devices before running USB tests.

Test	Estimated completion time	Description
Presence	1 second	Verifies that a USB device is connected

## Video Controller Tests

Test	Estimated completion time	Description
PCI-E 8 LinkWidth Verification	1 second	Verifies PCI link width is 8
Framebuffer Address as Data	2 minutes	Tests the framebuffer using framebuffer addresses as data

## AXD Mac OS X Tests

These tests are available if your Xserve is running AXD Mac OS X tools.

### Startup Tests

These tests are automatically run when you start up AXD Mac OS X tools.

SMBIOS tests check to see if bad memory was detected and mapped out at Xserve startup. When the Xserve tests memory at start up, it automatically maps out bad memory. Mac OS X doesn't see this mapped out memory, so the non-SMBIOS memory tests don't test it. The SMBIOS test reports these mapped out DIMMS.

When an ECC error occurs, memory catches the problem and fixes it. When you run other memory tests, the tests don't realize an error has occurred. The ECC tests detect these memory fixes and report them.

Test	Estimated completion time	Description
SMBIOS Self-Test	1 second	Checks the SMBIOS tables for 32-bit errors (type 18) and 64-bit errors (type 33). Also verifies that the mapped-in DIMM size is appropriate for the slot it's inserted into. If there's a size mismatch, an error occurs.
ECC Error Count	1 second	Reports the number of ECC errors, and then resets the count

## Ethernet Controller Tests

Data loop tests can add to network traffic. Consider disconnecting from the network before running the data loop tests.

Test	Estimated completion time	Description
MAC Address Verification	1 second	Verifies MAC address is not all FFs or 00s
Ethernet ROM Checksum	1 second	Verifies Ethernet ROM checksum is valid

Test	Estimated completion time	Description
MAC Data Loop	1 minute	Verifies that there's no data mismatch between sent and received data while looping within the MAC (a sublayer of the datalink layer in the ISO network reference model)
PHY Data Loop	1 minute	Verifies that there's no data mismatch between sent and received data while looping within the physical transport medium (PHY)

## Hard Drive Tests

Test	Estimated completion time	Description
Threaded Surface Scan	30 minutes for an 80 GB drive; 4 hours for a 750 GB drive	Scans the entire surface of a hard drive
Check SMART Status Test	1 second	Checks the SMART status of a hard drive

## Memory Tests

AXD Mac OS X memory tests test the first 2.5 GB of memory. All multicore memory tests listed in AXD EFI tools are run.

Even though these memory tests don't test all memory, run these tests to detect intermittent memory issues.

After the first 2.5 GB of memory is tested, the memory test then tests for ECC errors. When an ECC error occurs, memory catches the problem and fixes it. The test detects the number of memory fixes and reports them.

**Note:** The time required to complete memory tests correlates to the size of memory being tested. These estimates are based on testing 1 GB of memory.

Test	Estimated completion time	Description
Simple Test	12 minutes	Runs all multicore memory tests listed in AXD EFI tools, reports the number of ECC errors, and then resets the count

## Fan Tests

Test	Estimated completion time	Description
Verify Motor +/- 10%, 10 Reads High, 20 Low	2 minutes	Verifies the minimum and maximum fan speeds. Sets the minimum and maximum builds within 10% of the threshold and then does 10 consecutive reads at the maximum and 20 at the minimum.
Verify Motor Automatically +/- 15%	2 minutes	Verifies the minimum and maximum fan speeds. Sets the minimum and maximum builds within 15% of the threshold.

## Power Supply Tests

Test	Estimated completion time	Description
Good Bit	1 second	Checks if the power supply's good bit is set. If it's not set, this could indicate that the power supply isn't seated well, is bad, or that there's no AC connected.
Quick	5 seconds	This is available only if you have more than one power supply. This turns off the redundant power supplies so that only one is run on.

## Sensor Tests

Test	Estimated completion time	Description
Sensor Reads	1 second	Verifies that the sensor reads are within the preset sensor limits

## USB Tests

Connect USB devices before running USB tests.

Test	Estimated completion time	Description
Presence	1 second	Verifies that a USB device is connected

## Video Controller Tests

To run these tests, a display must be attached to any graphics cards being tested. The displays can't be asleep. For example, if you have two graphics cards, they both need displays attached and both displays must not be asleep.

Test	Estimated completion time	Description
OpenGL Point	10 seconds	Verifies video controller using a 2D point test
OpenGL Line	10 seconds	Verifies video controller using a 2D line test
OpenGL Triangle	10 seconds	Verifies video controller using a 2D triangle test
OpenGL Quad	10 seconds	Verifies video controller using a 2D quadrilateral test
OpenGL Quad with Texture	10 seconds	Verifies video controller using a 2D textured quadrilateral test
OpenGL Rectangle	10 seconds	Verifies video controller using a 2D rectangle test
OpenGL Cube	10 seconds	Verifies video controller using a 3D cube test
OpenGL Cube with Fog	10 seconds	Verifies video controller using a 3D cube with fog test
OpenGL Wireframe	10 seconds	Verifies video controller using a 3D wireframe test
OpenGL Solid Red Model	10 seconds	Verifies video controller using a 3D solid red model test
OpenGL Solid Red Model with Fog	10 seconds	Verifies video controller using a 3D solid red model with fog test